

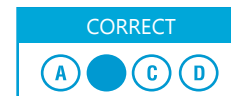
ISFO English Sample Paper

MAXIMUM TIME: 60 MINUTES

MAXIMUM MARKS: 50

INSTRUCTIONS

1. Please DO NOT OPEN the contest booklet until you are asked to do so.
2. The question paper comprises of 4 sections (Total 35 questions):
 - Section A: Vocabulary** 8-Questions (1 mark each)
 - Section B: Grammar** 12-Questions (1 mark each)
 - Section C: Reading and Writing** 10-Questions (1 mark each)
 - Section D: BrainBox** 5-Questions (4 marks each)
3. All questions are compulsory. There is no negative marking.
4. No electronic devices capable of storing and displaying visual information such as mobiles are allowed during the course of the exam.
5. Fill all your details properly on the OMR sheet.
6. There is only ONE correct answer of each question.
7. To mark your choice of answers by darkening the circles on the OMR Sheet, use an HB Pencil or a Blue/Black Ball Point Pen only.
8. Shade your answer clearly as per the given example.



DO NOT OPEN THIS TEST BOOKLET UNTIL YOU ARE ASKED TO DO SO

Roll No.:

Student's Name:

SECTION B : GRAMMAR

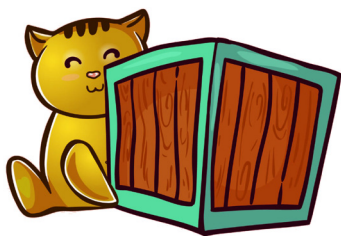
Look at the pictures and mark the correct options

5.



- a) An oyster
- b) A oyster
- c) A oysters
- d) The oysters

6. The cat is _____ the box.



- a) Over
- b) On
- c) Behind
- d) Under

SECTION C : READING AND WRITING

Complete the story with the help of the picture clues given.

In autumn season, the 7. _____



ange colours

- 7. a) Trees
- b) Leaves
- c) Nuts
- d) Fruit

and the 8. _____ fall off.



- 8. a) Leaves
- b) Flowers
- c) Nuts
- d) Apples

My favourite part of fall is jumping in the leaves.

Mark the correct options.

9. This is a _____ .



- a) string of peas
- b) string of beads
- c) string of flowers
- d) string of pebbles

10. Arrange in alphabetical order.

Class, Clerk, Came, Count, Comb

- a) Came, Comb, Count, Class, Clerk
- b) Came, Class, Clerk, Comb, Count
- c) Came, Class, Count, Comb, Clerk
- d) Came, Count, Comb, Clerk, Class



ANSWERS

1. (D) 2. (C) 3. (A) 4. (C) 5. (A) 6. (C) 7. (A) 8. (A) 9. (B) 10. (B)