



6th International Olympiad of Science 2014



Presented by :

SILVER ZONE FOUNDATION

Organized by

SOCIETY OF SCIENCE EDUCATION

New Delhi, India

FOR SUPREMACY IN SCIENCE

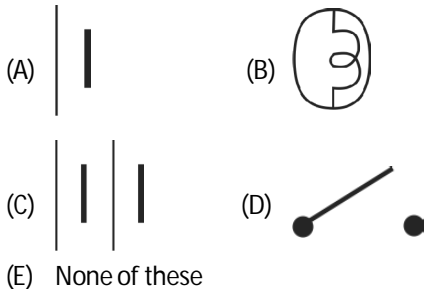
www.silverzone.org

CLASS 7th SYLLABUS & SAMPLE QUESTIONS

Nutrition in plants, Nutrition in animals, Fiber to fabric, Heat, Acids, Bases and Salts, Physical and Chemical changes, Weather, Climate and Adaptations of animals to climate, Winds, Storms and Cyclones, Soil, Respiration in organisms, Transportation in animals and plants, Reproduction in plants, Motion and time, Electric current and its effects, Light, Water: a precious resource, Forests: our lifeline, Wastewater story, General & applied science

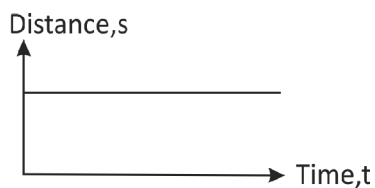
The Actual Question Paper Contains 40 Questions. The Duration of the Test Paper is 60 Minutes.

1. Which one of the following is the symbol of an electric bulb?



(E) None of these

2. Look at the following graph:



The above graph shows that the object is in:

- (A) Rest
(B) Motion
(C) Uniform motion
(D) Uniform acceleration
(E) All of these

3. A clinical thermometre has kink in its tube. What function does it perform?

- (A) It prevents mercury from coming out of bulb
(B) It prevents back flow of mercury into the bulb
(C) It helps in connecting the mercury tube with the bulb
(D) All of these
(E) None of these

4. Given below is a list of methods of reproduction. Categorized them as asexual and sexual reproduction.

Budding, spore formation, fertilization, pollination, fragmentation, vegetative reproduction

- (A) **Asexual:** pollination, budding, spore formation, fragmentation
Sexual: Fertilization, vegetative reproduction
(B) **Asexual:** pollination, budding, fragmentation **Sexual:** Fertilization, vegetative reproduction, spore formation
(C) **Asexual:** budding, spore formation, fragmentation, vegetative reproduction

Sexual: Fertilization, pollination

- (D) All of these
- (E) None of these

5. Name the blood cells which carry oxygen in our body.

- (A) RBC
- (B) WBC
- (C) Blood platelets
- (D) Antigen
- (E) None of these

6. Which one of the following statements is correct?

Statement A: The higher the electrical resistance of a material, the greater is the heat produced.

Statement B: The higher the electrical resistance of a material, the lower is the heat produced.

- (A) Statement (A) is true
- (B) Statement (B) is true
- (C) Both statement (A) and (B) are true
- (D) Both statement (A) and (B) are false
- (E) None of these

7. In the following table, few activities are given:

| Number | Activity |
|--------|-------------------------|
| 1. | Melting of ice |
| 2. | Decomposition of leaves |
| 3. | Burning of wood |
| 4. | Evaporation of water |
| 5. | Digestion of food |
| 6. | Spoiling of food |
| 7. | Painting of wooden box |

Which of the preceding activities involve chemical change?

- (A) Activities 1,2,3,5
- (B) Activities 2,3,4,5
- (C) Activities 2,3,4,6
- (D) Activities 2,3,5,6
- (E) None of these

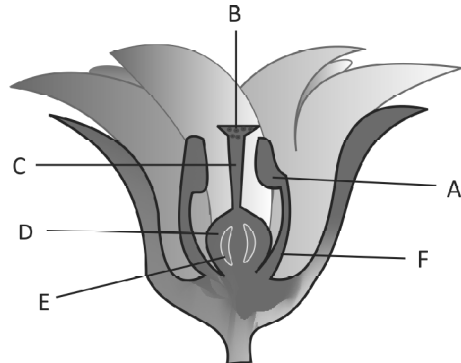
8. An atom gets charged due to:

- (A) Transfer of proton
- (B) Transfer of neutron
- (C) Transfer of electron
- (D) Transfer of nucleus
- (E) None of the above

9. If a ball is thrown vertically upwards in the moving train, what will happen?

- (A) Ball returns to the thrower
- (B) Ball does not return to the thrower
- (C) Ball moves in the direction of train
- (D) Ball moves in opposite direction of train
- (E) None of these

10. Name the part of the flower, which has been represented by the letter A.



- (A) Anther
- (B) Stigma
- (C) Filament
- (D) Style
- (E) None of these

ANSWERS

1. (B) 2. (A) 3. (B) 4. (C) 5. (A) 6. (A) 7. (D) 8. (C) 9. (A) 10. (A)