



Presented by :

SILVER
ZONE
FOUNDATION

Organized by

SOCIETY OF SCIENCE
EDUCATION

New Delhi, India

FOR SUPREMACY IN SCIENCE

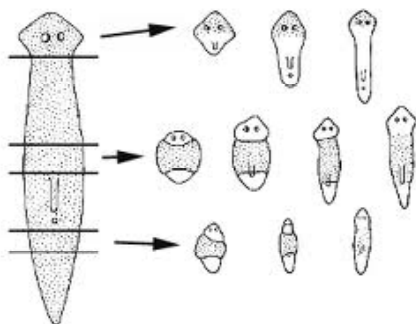
www.silverzone.org

CLASS 10th SYLLABUS & SAMPLE QUESTIONS

Chemical reactions and equations, Acids, bases and salts, Metals and non-metals, Carbon and its compounds, Periodic classification of elements, Life processes, Control and coordination, How do organisms reproduce? Heredity and evolution, Light – reflection and refraction, Human eye and colourful world, Electricity, Magnetic effects of electric currents, Sources of energy, Our environment, Management of natural resources, General & applied science

The Actual Question Paper Contains 40 Questions. The Duration of the Test Paper is 60 Minutes.

1. Which mode of reproduction has been shown in the following figure?



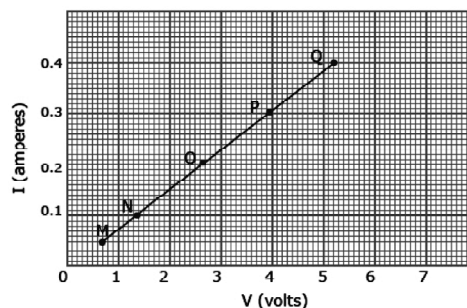
- (A) Asexual mode of reproduction
(B) Sexual mode of reproduction
(C) Parthenogenesis
(D) All of these
(E) None of these

2. If 100 J of energy is available at the producer level, calculate the amount of energy available to hawk in the following food chain.

Green plants → Grasshopper → Frog → Snake → Hawk

- (A) 0.1 J (B) 0.01 J
(C) 10 J (D) 10000 J
(E) None of these

3. Examine the graph and calculate the resistance of the coil at the point Q?



- (A) 12 Ohms (B) 5.2 Ohms
(C) 13 Ohms (D) 0.4 Ohms
(E) None of these

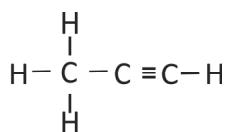
4. The table given below shows four chemical reactions:

Equation	Chemical Equation
1.	$2Al + 3H_2O \rightarrow Al_2O_3 + 3H_2$
2.	$Fe + 4H_2O \rightarrow Fe_3O_4 + 4H_2$
3.	$Fe + HCl \rightarrow FeCl_2 + H_2$
4.	$Mg + 2HCl \rightarrow MgCl_2 + H_2$

Which of the preceding chemical reactions satisfy the law of conservation of mass?

- (A) Equation 1 and 2
 (B) Equation 1 and 4
 (C) Equation 3 and 4
 (D) Equation 2 and 4
 (E) None of these

5. Name the hydrocarbon given below.



- (A) Propanal (B) Propene
 (C) Propyne (D) Propanoic acid
 (E) None of these

6. On which one of the following factors the strength of an electromagnet depends?

- (A) The number of turns in the coil
 (B) The current flowing in the coil
 (C) The length of air gap between its poles
 (D) All of these
 (E) None of these

7. There is a device in the motor which is used to reverse the direction of current in the coil of a motor. What is the name of this device?

- (A) Commutator (B) Magnetic field
 (C) Armature (D) All of these
 (E) None of these

8. What are the end products of the anaerobic respiration that the yeast perform?

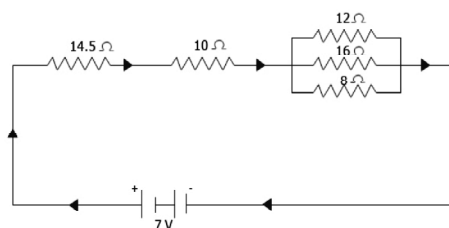
- (A) Carbon dioxide, water and energy

- (B) Alcohol, carbon dioxide and energy
 (C) Lactic acid, carbon dioxide, and energy
 (D) Alcohol, water and energy
 (E) None of these

9. Which one of the following statements correctly describes the buoyant force?

- (A) The buoyant force is the downward force that a fluid exerts on fluid when it displaces the fluid.
 (B) The buoyant force is the upward force that a fluid exerts on an object in the fluid.
 (C) The buoyant force is the upward force that a fluid exerts on fluid when it displaces the fluid.
 (D) The buoyant force is the downward force that a fluid exerts on an object in the fluid.
 (E) None of these

10. Examine the given circuit and calculate the total current flowing in the circuit.



- (A) 28 ampere
 (B) 4 ampere
 (C) 0.25 ampere
 (D) 3.7 ampere
 (E) None of these

ANSWERS

1. (A) 2. (B) 3. (C) 4. (B) 5. (C) 6. (D) 7. (A) 8. (B) 9. (B) 10. (C)