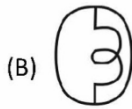
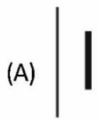
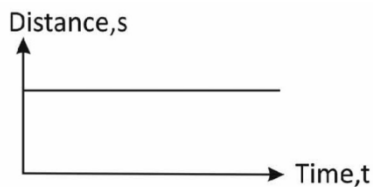


1. Which one of the following is the symbol of an electric bulb?



2. Look at the following graph:



The above graph shows that the object is in:

- (A) Rest (B) Motion
(C) Uniform motion (D) Uniform acceleration
3. A clinical thermometer has kink in its tube. What function does it perform?
- (a) It prevents mercury from coming out of bulb
(b) It prevents back flow of mercury into the bulb
(c) It helps in connecting the mercury tube with the bulb
(d) All of these

4. Given below is a list of methods of reproduction. Categorized them as asexual and sexual reproduction.

Budding, spore formation, fertilization, pollination, fragmentation, vegetative reproduction

- (a) Asexual: pollination, budding, spore formation, fragmentation

Sexual: Fertilization, vegetative reproduction

- (b) Asexual: pollination, budding, fragmentation Sexual: Fertilization, vegetative reproduction, spore formation

- (c) Asexual: budding, spore formation, fragmentation, vegetative reproduction Sexual: Fertilization, pollination

- (d) All of these

5. Name the blood cells which carry oxygen in our body.

- (A) RBC (B) WBC
(C) Blood platelets (D) Antigen

6. Which one of the following statements is correct?

Statement A: The higher the electrical resistance of a material, the greater is the heat produced.

Statement B: The higher the electrical resistance of a material, the lower is the heat produced.

- (A) Statement (A) is true (B) Statement (B) is true
(C) Both statement (A) and (B) are true (D) Both statement (A) and (B) are false

7. In the following table, few activities are given:

Number	Activity
1.	Melting of ice
2.	Decomposition of leaves
3.	Burning of wood
4.	Evaporation of water
5.	Digestion of food
6.	Spoiling of food
7.	Painting of wooden box

Which of the preceding activities involve chemical change?

- (a) Activities 1,2,3,5 (b) Activities 2,3,4,5
(c) Activities 2,3,4,6 (d) Activities 2,3,5,6

8. An atom gets charged due to:

- (a) Transfer of proton (b) Transfer of neutron
(c) Transfer of electron (d) Transfer of nucleus

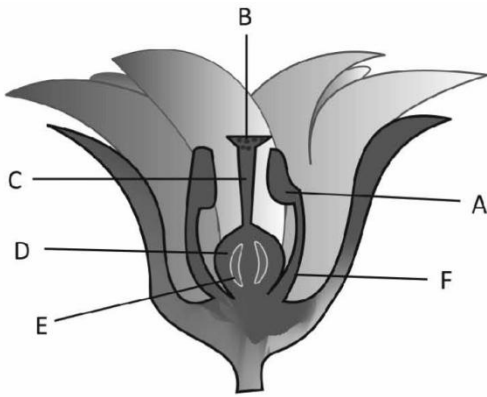
9. If a ball is thrown vertically upwards in the moving train, what will happen?

- (A) Ball returns to the thrower
(B) Ball does not return to the thrower

(C) Ball moves in the direction of train

(D) Ball moves in opposite direction of train

10. Name the part of the flower, which has been represented by the letter A.



(a) Anther

(b) Stigma

(c) Filament

(d) Style