

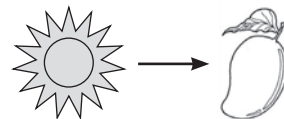
## Sample Question Paper

1. **This rock is so light, it can float on water. It is called .....**
  - (A) Granite
  - (B) Pumice
  - (C) Marble
  - (D) Gabbro
  - (E) None of these
  
2. **The most abundant type of sedimentary rock is .....**
  - (A) Conglomerate
  - (B) Sandstone
  - (C) Limestone
  - (D) Shale
  - (E) None of these
  
3. **The substance in a rock that is of no use to us is called .....**
  - (A) Ganguer
  - (B) Mineral
  - (C) Ore
  - (D) Metal
  - (E) None of these
  
4. **A ripe fruit from a tree always falls down to the earth not in the opposite direction.**  
**Why**
  - (A) Because of the chemical energy in the fruit
  - (B) Because of the gravitational force of the earth
  - (C) Because of wind energy
  - (D) Because of mechanical energy
  - (E) None of these
  
5. **The weight of any object depends on .....**
  - (A) The amount of matter present in the body
  - (B) The measure of the gravitational force acting on it.
  - (C) Its position
  - (D) The pressure acting on it.
  - (E) None of these
  
6. **The figure represents a ..... used to measure .....**
  - (A) Beam balance, weight
  - (B) Beam balance, mass
  - (C) Spring balance, weight
  - (D) Spring balance, mass
  - (E) None of these



16. The diagram shows the conversion of one form of energy into another. Here solar energy is converted into .....

- (A) Chemical energy  
 (B) Heat energy  
 (C) Muscular energy  
 (D) Light energy  
 (E) None of these



8. The burning of bonfire is an instance of .....

- (A) Chemical energy getting converted into muscular energy.  
 (B) Chemical energy getting converted into heat and light energy  
 (C) Solar energy changing to heat and light energy.  
 (D) All of these.  
 (E) None of these



9. Which soil contains equal amounts of clay and sand?

- (A) Clayey soil  
 (B) Sandy soil  
 (C) Rocky soil  
 (D) Loamy soil  
 (E) None of these

10. Marble in its purest form is ..... in colour.

- (A) White  
 (B) Pink  
 (C) Black  
 (D) Green  
 (E) None of these

*Direction: (Q 11 – 13) Pick the odd one out:*

11. (A) Chalk & water  
 (B) Sugar & water  
 (C) Salt & water  
 (D) Oxygen & water  
 (E) None of these

12. (A) Feather  
 (B) Iron nail  
 (C) Ice cube  
 (D) Oil  
 (E) None of these

13. (A) Sponge  
 (B) Cotton  
 (C) Jute  
 (D) Plastic  
 (E) None of these

14. Substances which are not soluble in water can be separated from water by .....

- (A) Filtration  
 (B) Sedimentation  
 (C) Decantation  
 (D) All of the above  
 (E) None of these

15. A feather floats on water because .....

- (A) A feather has a density greater than water.
- (B) A feather has a density less than water.
- (C) A feather has density equal to the density of water.
- (D) A feather is very heavy, so it floats.
- (E) None of these



16. Identify the machine in the picture.

- (A) Sedimentation machines
- (B) Water purifying machine
- (C) Distillation machine
- (D) Boiler
- (E) None of these



17. This machine is suitable for

- (A) Small households
- (B) Factories
- (C) Large offices
- (D) All of these
- (E) None of these

18. Which of these are chemicals used for purifying water?

- (A) Sodium nitrate
- (B) Potassium permanganate
- (C) Chlorine
- (D) Both (B) and (C)
- (E) None of these

19. Rainwater is pure water as it has ..... impurities.

- (A) Most
- (B) Least
- (C) Some
- (D) No
- (E) None of these

20. Water is one of the main components of ..... industries.

- (A) Toy
- (B) Soap
- (C) Metal
- (D) Pharmaceutical
- (E) None of these

21. A chameleon camouflages itself by .....

- (A) Resembling a non-living object like a stone or a dry leaf.
- (B) Resembling a part of a plant.
- (C) Changing its body colour to match that of its surroundings.
- (D) By burrowing into the soil.
- (E) None of these

22. A deep sleep like state for many animals who cannot tolerate lack of water and extreme heat is called .....

- (A) aestivation
- (B) hibernation
- (C) migration
- (D) locomotion
- (E) None of these

23. The movement of large number of animals from one place to another is called .....

- (A) Locomotion
- (B) Migration
- (C) Germination
- (D) Reproduction
- (E) None of these

24. Why does a burrowing animal like a mole have small or hidden ears?

- (A) To prevent soil from entering their ears while digging
- (B) To prevent loss of body heat
- (C) To help them hide from predators
- (D) All of these
- (E) None of these

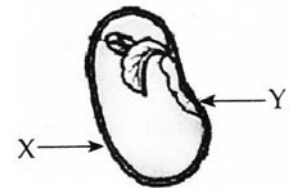
25. The wings of a bat are made of .....

- (A) Thin membrane like skin
- (B) Feathers
- (C) Muscles
- (D) All of these
- (E) None of these



26. What is 'Y' in this picture?

- (A) Seed coat
- (B) Plumule
- (C) Cotyledon
- (D) Radical
- (E) None of these.



27. 'X' in the picture of the seed is .....

- (A) Seed coat
- (B) Radical
- (C) Plumule
- (D) Cotyledon
- (E) None of these.

28. A ..... is the reproductive part of a plant.

- (A) Seed
- (B) Stem
- (C) Flower
- (D) Leaf
- (E) None of these.

29. Seeds will not be produced in a plant if its ..... do not exist.

- (A) Seeds
- (B) Flowers
- (C) Stems
- (D) Roots
- (E) None of these.

30. The development of a seed into a seedling is called .....

- (A) Transpiration
- (B) Photosynthesis
- (C) Evaporation
- (D) Germination
- (E) None of these.

31. The given picture shows terrace farming. It helps in \_\_\_\_\_.

- (A) Reducing soil erosion by using non-arable land
- (B) Reducing soil erosion by water
- (C) Reducing soil erosion by overgrazing
- (D) Reducing soil erosion by deforestation
- (E) None of these



32. Which of the following statements is correct?

- (A) The crust or the upper layer of the Earth is made of volcanoes.
- (B) The liquid that comes out of a volcano is called magma.
- (C) Based on the nature of eruption, volcanoes can be active, dormant or extinct.
- (D) The magnitude of tsunami is measured on Richter Scale.
- (E) None of these

33. Natural processes change the surface of Earth. Some changes occur rapidly and some occur slowly. Which of the following would cause the slowest change in Earth's surface?

- (A) Wind
- (B) Landslides
- (C) Volcanoes
- (D) Earthquakes.
- (E) None of these

34. Which of the things listed below are biodegradable?

- (i) Log
  - (ii) Gold necklace
  - (iii) Credit card
  - (iv) Plastic toys
  - (v) Roasted chicken
  - (vi) Apple
- (A) (i) and (ii)
  - (B) (iii) and (iv)
  - (C) (iii), (iv) and (v)
  - (D) (i), (iv) and (vi)
  - (E) None of these

35. Which of the following are non-conventional energy sources?

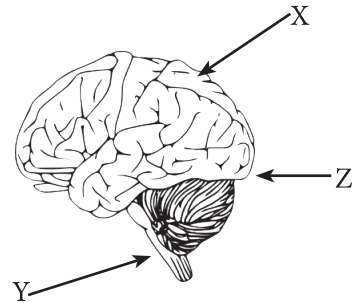
- (i) Coal
  - (ii) Petroleum
  - (iii) Solar radiations
  - (iv) Electricity from nuclear plants.
- (A) (ii) & (iii)                      (B) (i) and (iii)  
(C) (ii) and (iv)                      (D) ((iii) and (iv)  
(E) None of these

36. If an earthquake occurs, which of the following you should NOT do?

- (A) If you are indoors, stay in and get under a desk or a table.  
(B) If you are outdoors, stay away from trees and buildings.  
(C) If you are on a beach, get into the sea.  
(D) All of these  
(E) None of these

37. Z points to the .....

- (A) Cerebrum  
(B) Cerebellum  
(C) Medulla  
(D) All of these  
(E) None of these.



38. Y is the .....

- (A) Cerebrum  
(B) Cerebellum  
(C) Medulla  
(D) All of these  
(E) None of these.

39. X points to the .....

- (A) Cerebellum  
(B) Cerebrum  
(C) Medulla  
(D) All of these  
(E) None of these.

40. This insect is a carrier of .....

- (A) Malaria  
(B) Dengue  
(C) Encephalitis  
(D) All of these  
(E) None of these.



*Note: The actual Question Paper will translated in Hindi at the time of exam.*

Darken your choice with HB Pencil																							
1	A	B	C	D	E	11	A	B	C	D	E	21	A	B	C	D	E	31	A	B	C	D	E
2	A	B	C	D	E	12	A	B	C	D	E	22	A	B	C	D	E	32	A	B	C	D	E
3	A	B	C	D	E	13	A	B	C	D	E	23	A	B	C	D	E	33	A	B	C	D	E
4	A	B	C	D	E	14	A	B	C	D	E	24	A	B	C	D	E	34	A	B	C	D	E
5	A	B	C	D	E	15	A	B	C	D	E	25	A	B	C	D	E	35	A	B	C	D	E
6	A	B	C	D	E	16	A	B	C	D	E	26	A	B	C	D	E	36	A	B	C	D	E
7	A	B	C	D	E	17	A	B	C	D	E	27	A	B	C	D	E	37	A	B	C	D	E
8	A	B	C	D	E	18	A	B	C	D	E	28	A	B	C	D	E	38	A	B	C	D	E
9	A	B	C	D	E	19	A	B	C	D	E	29	A	B	C	D	E	39	A	B	C	D	E
10	A	B	C	D	E	20	A	B	C	D	E	30	A	B	C	D	E	40	A	B	C	D	E