



Olympiads | Publication | Education
ISO 9001:2008 CERTIFIED

the metamorphosis starts from here....



**Brilliant International
Olympiad of
SCIENCE**

Class-3 (Syllabus and Sample Question Paper)

Characteristics of Land Animals, Characteristics of Aquatic Animals, Characteristics of Birds, Knowing Plants, Parts of Human Body (Identification), Communication, our senses: An introduction, Chemicals Around Us (Identification), Motion , Transport And Travel, Natural Resources : An Introduction, Keeping Our Environment Clean

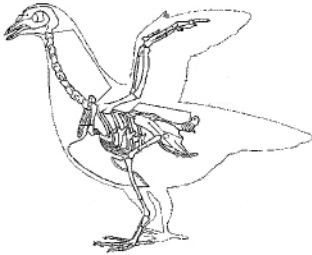
The Actual Question Paper Contains 40 Questions. The Duration of the Test Paper is 60 Minutes

1. The following animals depend on _____ for their food.



- (A) Mountain (B) Sky (C) Plants (D) All of these
(E) None of these

2. Bird's forelimb is modified as _____ .



- (A) Eyes (B) Thorns (C) Nails (D) Wings
(E) None of these

3. Plant gives out _____ in day time.

- (A) Oxygen (B) Carbon dioxide (C) Water (D) Nitrogen
(E) None of these

4. Which gas is used in carbonated drinks?



- (A) Oxygen (B) Carbon dioxide (C) Nitrogen (D) All of these
(E) None of these

5. Which of the following pollutes the environment?

- (A) Afforestation (B) Deforestation
(C) Burning fossil fuel (D) Both (B) and (C)
(E) None of these
-

6. The two holes of our nose is called as



- (A) Septum (B) Blowholes (C) Nostrils (D) Cartilage
(E) None of these
-

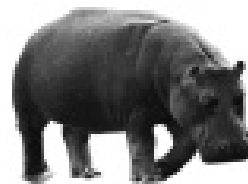
7. How much of our body is made up of water ?

- (A) 75% (B) 25% (C) 6% (D) 1%
(E) None of these
-

8. Which one of the following is the world's largest land mammal ?



(A) African Elephant



(B) Hippo



- (C) Lion
(E) None of these



(D) White Rhino

9. Which one of the following parts of plant uses sunlight to make food ?

- (A) Leaves (B) Stem (C) Roots (D) Flower
(E) None of these
-

10. The outermost layer of our skin is called as?



- (A) Dermis (B) Epidermis
(C) Blubber (D) Subcutaneous layer
(E) None of these

11. Dolphin is _____?



- (A) A Small sea fish
(B) An aquatic bird
(C) An ocean anthropod
(D) All of above
(E) None of these

12. Which one of the following parts holds the plant in the ground and absorbs water from the soil ?

- (A) Flower
(B) Roots
(C) Leaves
(D) Stem
(E) None of these

13. Which gas makes up the largest part of air?

- (A) Carbondioxide
(B) Oxygen
(C) Nitrogen
(D) Sulphur dioxide
(E) None of these

14. Which one of the following words has the same meaning as Sensation ?

- (A) Emotion
(B) Feeling
(C) Irribability
(D) All of above
(E) None of these

15. The skin does all of these except ?

- (A) Protect our bodies
(B) Helps to keep our bodies at just right temperature
(C) Help the body absorb sugary foods
(D) Allow us to have the sense of touch
(E) None of these

ANSWERS

- | | | | | |
|-------|-------|-------|-------|-------|
| 1. C | 2. D | 3. B | 4. B | 5. D |
| 6. C | 7. A | 8. A | 9. A | 10. B |
| 11. C | 12. B | 13. C | 14. B | 15. C |