

EtG

OLYMPIAD EXPLORER



Workbook for

International **ENGLISH** Olympiad & Other
National/International Olympiads/Talent Search Exams.

Based on CBSE, ICSE, GCSE, State Board Syllabus & NCF (NCERT)

100's of Q's with answers

- Chapterwise Practice Q's
- Revision Q's
- Sample Paper



Class

1

EDUHEAL FOUNDATION

• LEARNING FOR LIFE •

EduHeal Foundation conducts 5 Olympiads annually reaching out to 3,500 + Schools
• 4 Lakh + Students • 50,000 Coordinating Teachers and having 500 Resource persons
in English / Maths / Science / Biotech / Computer & 300 Regional Coordinators.

PRIZES

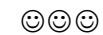


WORKSHOP • TEACHER TRAINING PROG. • MAGAZINE/LAB GRANT • PRINCIPAL LEADERSHIP AWARD.

Contents

S.No.	Chapters	Page No.
1.	Fill the Correct Alphabet	1
2.	Who I am?	8
3.	Rhyming Words	20
4.	Singular Plural	24
5.	Genders	27
6.	Odd One Out	29
7.	Correct Explanation	33
8.	Noun, Pronouns, Adjectives & Verbs	38
9.	Fill the Correct Word	46
10.	Complete the Sentence	48
11.	Simple Sentences	53
12.	Comprehension	58
13.	IEO Sample Paper	62

Please note : There are no revision questions for class - 1 students.



SYLLABUS GUIDELINES**Based on CBSE, ICSE & GCSE Syllabus
& NCF guidelines revised by NCERT****Section I.**

Comprehension: General topics (One word answers), Story based (One word answers should be of one word).

Section II.

Knowledge: Identification of things/objects of daily use, Identification of characters, Identification of Monuments/places, Answering general questions.

Section III.

Grammar: Alphabetical order, Use of small /capital letters, Correct spellings/ pronunciation of a word and knowledge of sounds, Noun (Elementary knowledge and recognition), Pronoun (Elementary knowledge and recognition), Verb (Elementary knowledge and recognition), Singular/plural, Formation of short and simple sentences, Opposite words, Synonyms.

I. Mark the letter which will make both the words correct.

- Q.1.** s _ d, b _ d.
 (a) a (b) o
 (c) n (d) none of these
- Q.2.** B _ t, M _ t.
 (a) e (b) t
 (c) a (d) none of these
- Q.3.** __ amb, __ amp.
 (a) w (b) L
 (c) p (d) none of these
- Q.4.** m _ p, t _ p
 (a) a (b) e
 (c) g (d) none of these
- Q.5.** s _ op, __ ape
 (a) s (b) w
 (c) t (d) none of these
- Q.6.** __ ight, __ ion.
 (a) l (b) h
 (c) c (d) none of these
- Q.7.** h _ _ e, r _ _ e.
 (a) po (b) op
 (c) t e (d) none of these
- Q.8.** __ ne, __ w _
 (a) o (b) t
 (c) l (d) none of these
- Q.9.** Fi _ _ , se _ _ n.
 (a) v, e (b) t, v
 (c) l, u (d) none of these
- Q.10.** B _ _ , T _ _
 (a) o, y (b) t, y
 (c) r, y (d) none of these
- Q.11.** ki _ _ , ri _ _ .
 (a) ng (b) te
 (c) ht, it (d) none of these
- Q.12.** Re _ _ _ , sa _ _ .

- (a) ad, id. (b) id, ad.
(c) le, te (d) none of these
- Q.13.** Go __, bo __.
(a) og, le (b) od, ot
(c) o d, he (d) none of these
- II. Fill in the correct alphabet to make the word correct.**
- Q.14.** Tomo__ow
(a) ee (b) rr
(c) cc (d) none of these
- Q.15.** Yes __ __day
(a) der (b) ter
(c) ber (d) none of these
- Q.16.** ma__
(a) de (b) ke
(c) both a and b (d) none of these
- Q.17.** Ani__l
(a) ma, (b) na,
(c) la (d) none of these
- Q.18.** R__c__
(a) i, l (b) i, e
(c) l, e (d) none of these
- Q.19.** S__g__r
(a) u, a (b) t, a
(c) a, u (d) none of these
- Q.20.** e__e__y
(a) v, e (b) v, r
(c) r, v (d) none of these
- Q.21.** en__m__
(a) e, r (b) e, y
(c) y, e (d) none of these
- Q.22.** f__i__nd
(a) r, m (b) r, e.
(c) r, a (d) none of these
- Q.23.** t__m__le.
(a) e, p (b) e, n
(c) p, p (d) none of these
- Q.24.** f__s__t__val
(a) e, g (b) e, i.
(c) m, i (d) none of these

- Q.25.** f__th__r.
(a) a, e (b) e, a
(c) t, e (d) none of these
- Q.26.** m__t__h__e__.
(a) e, o (b) e, r
(c) o, r. (d) none of these
- Q.27.** s__s__er.
(a) i, g (b) i, t.
(c) e, h (d) none of these
- Q.28.** b__ot__er.
(a) r, h (b) h, r
(c) f, t (d) none of these
- Q.29.** ch__ld__en.
(a) i, f (b) i, r.
(c) t, y (d) none of these
- Q.30.** pr__nc__pal.
(a) i, i (b) o, o
(c) e, e (d) none of these
- Q.31.** h__n__
(a) e, n (b) a, d
(c) p, e (d) none of these
- Q.32.** H__l__.
(a) o, i (b) y, e.
(c) r, t (d) none of these
- Q.33.** D__w__li
(a) e, w (b) i, a
(c) a, e (d) none of these
- Q.34.** d__u__hter
(a) a, g (b) g, a
(c) a, h (d) none of these
- Q.35.** s__n
(a) u (b) d
(c) r (d) none of these
- Q.36.** a__r__l.
(a) p, i (b) e, r
(c) p, r (d) none of these
- Q.37.** w__sh__.
(a) a (b) e
(c) t (d) none of these

- Q.38.** c_m_
 (a) o, e (b) e, o
 (c) e, o (d) none of these
- Q.39.** m_r_h.
 (a) w, e (b) a, c
 (c) e, t (d) none of these
- Q.40.** m_n_h.
 (a) o, t (b) t, y
 (c) o, e (d) none of these
- Q.41.** pr_z_.
 (a) f, e (b) i, r
 (c) i, e. (d) none of these
- Q.42.** d_i_y.
 (a) a, i (b) e, i
 (c) a, l (d) none of these
- Q.43.** s_o_.
 (a) h, p (b) p, g
 (c) h, g (d) none of these
- Q.44.** _il
 (a) o (b) e
 (c) u (d) none of these
- Q.45.** s_a.
 (a) w (b) a
 (c) e (d) none of these
- Q.46.** r_ad.
 (a) u (b) s
 (c) e (d) none of these
- Q.47.** ro_d.
 (a) e (b) a
 (c) d (d) none of these
- Q.48.** c_ty.
 (a) y (b) r
 (c) i (d) none of these
- Q.49.** c_ld.
 (a) o (b) e
 (c) r (d) none of these
- Q.50.** M_n_ay.
 (a) a n (b) o, d
 (c) c, d (d) None of these

- Q.51.** T_e_day.
 (a) u, e (b) u, s
 (c) s, e (d) None of these
- Q.52.** W_d_esd_y.
 (a) a, b, d (b) e, n, a
 (c) a, l, m (d) None of these
- Q.53.** T_u_sday.
 (a) h, r (b) e, r
 (c) t, m (d) None of these
- Q.54.** F_i_ay.
 (a) e, r (b) r, l
 (c) r, d (d) None of these
- Q.55.** S_t_r_ay.
 (a) a, u, d (b) a, m, m
 (c) d, l, n (d) None of these

III. Fill with the correct vowels.

- Q.56.** A d_g.
 (a) o (b) e
 (c) a (d) None of these
- Q.57.** A h_n.
 (a) e (b) a
 (c) l (d) None of these
- Q.58.** T_n __ggs.
 (a) e, a (b) a, o
 (c) e, e (d) None of these
- Q.59.** A k_d.
 (a) a (b) l
 (c) i (d) None of these
- Q.60.** A b_g p_g.
 (a) l, a (b) a, i
 (c) i, i (d) None of these
- Q.61.** A b_g t_y .
 (a) o, e (b) i, o
 (c) l, u (d) None of these
- Q.62.** A b_s.
 (a) l (b) u
 (c) e (d) None of these
- Q.63.** L__k at the b_y.

- (a) uu, u (b) oo, o
(c) ee, e (d) None of these
- Q.64.** H__t.
(a) ea (b) l e
(c) ae (d) None of these
- Q.65.** I driv__ _ car.
(a) e, i (b) e, a
(c) l, o (d) None of these
- Q.66.** I g_ t_ sch__l.
(a) e, e, ee (b) o, o, oo
(c) l, l, ii (d) None of these
- Q.67.** H_v_ milk.
(a) a, e (b) e, o
(c) e, a (d) None of these
- Q.68.** W_ll y_u c_me?
(a) i, o, o (b) e, l, o
(c) e, u, o (d) None of these
- Q.69.** _ Jar.
(a) i (b) o
(c) a (d) None of these
- Q.70.** _ c_r.
(a) e, o (b) e, a
(c) a, a (d) None of these
- Q.71.** The b_ll.
(a) r (b) e
(c) l (d) None of these
- Q.72.** A g_t_ is cl_sed.
(a) a, e, o (b) e, l, o
(c) l, o, u (d) None of these
- Q.73.** A l_m_ m_n.
(a) a, a, a (b) e, e, e.
(c) a, e, a (d) None of these
- Q.74.** A j__p.
(a) a, a (b) e, e
(c) a, i (d) None of these
- Q.75.** A tr__.
(a) ee (b) ea
(c) ae (d) None of these

- Q.76.** Thr__
(a) ee (b) ae
(c) aa (d) None of these
- Q.77.** W__p.
(a) ii (b) ee
(c) aa (d) None of these



ANSWERS

1. (a) 2. (c) 3. (b) 4. (a) 5. (c) 6. (a) 7. (b) 8. (a)
9. (a) 10. (a) 11. (a) 12. (a) 13. (b) 14. (b) 15. (b) 16. (c)
17. (a) 18. (b) 19. (a) 20. (b) 21. (b) 22. (b) 23. (a) 24. (b)
25. (a) 26. (c) 27. (b) 28. (a) 29. (b) 30. (a) 31. (b) 32. (a)
33. (b) 34. (a) 35. (a) 36. (a) 37. (a) 38. (a) 39. (b) 40. (a)
41. (c) 42. (c) 43. (a) 44. (a) 45. (c) 46. (c) 47. (b) 48. (c)
49. (a) 50. (b) 51. (b) 52. (b) 53. (a) 54. (c) 55. (a) 56. (a)
57. (a) 58. (c) 59. (c) 60. (c) 61. (b) 62. (b) 63. (b) 64. (a)
65. (b) 66. (b) 67. (a) 68. (a) 69. (c) 70. (c) 71. (b) 72. (a)
73. (c) 74. (b) 75. (a) 76. (a) 77. (b)



Q.1. What are these?



- (a) T-shirts
(b) shirts
(c) pants
(d) none of these

Q.2. Which is this animal?



- (a) monkey
(b) frog
(c) lizard
(d) none of these

Q.3. What is this scene of?

- (a) stadium
(b) play ground
(c) hospital
(d) none of these



Q.4. The picture shows a



- (a) radio
(b) TV
(c) car
(d) none of these

Q.5. This is a picture of



- (a) singers
(b) lawyers
(c) soldiers
(d) none of these

Q.6. This is a picture of a



Class - 1

9

- (a) plane
(b) spaceship
(c) ship
(d) none of these

Q.7. This is a picture of a



- (a) cook
(b) sweeper
(c) doctor
(d) none of these

Q.8. This is a picture of a



- (a) sunset
(b) sunrise
(c) rainy day
(d) none of these

Q.9. This is a



- (a) forest
(b) park
(c) house
(d) none of these

Q.10. The image is of



- (a) sipper
(b) thermometer
(c) dropper
(d) none of these

Q.11. What is this?



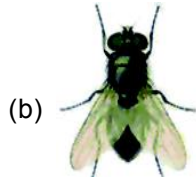
- (a) one rupee coin
- (b) two rupee coin
- (c) five rupee coin
- (d) none of these

Q.12. This is a photo of a-



- (a) soldier
- (b) king
- (c) any of these
- (d) none of these

Q.13. Which is a bat?



- (a) 
- (b) 
- (c) 
- (d) none of these

Q.14. Which monument of India is this?



- (a) Qutub Minar
- (b) Taj Mahal
- (c) Red Fort
- (d) None of these

Q.15. Which famous monument is this?



- (a) Humayun Tomb
- (b) Qutub Minar
- (c) Red Fort
- (d) None of these

Q.16. What is this woman doing?



- (a) running
- (b) cooking
- (c) reading
- (d) none of these

Q.17. In which city this monument stands?



- (a) Delhi
- (b) Mumbai
- (c) Agra
- (d) none of these

Q.18. Which building is this?



- (a) Lotus Temple
- (b) Gateway of India
- (c) Qutub Minar
- (d) None of these

Q.19. Following building is known as-



- (a) Qutub minar
- (b) Jantar Mantar
- (c) Fatehpur Sikri
- (d) None of these



ANSWERS

- 1. (a) 2. (b) 3. (a) 4. (b) 5. (c) 6. (b) 7. (a) 8. (c)
- 9. (c) 10. (b) 11. (a) 12. (b) 13. (c) 14. (b) 15. (c) 16. (b)
- 17. (b) 18. (a) 19. (b)

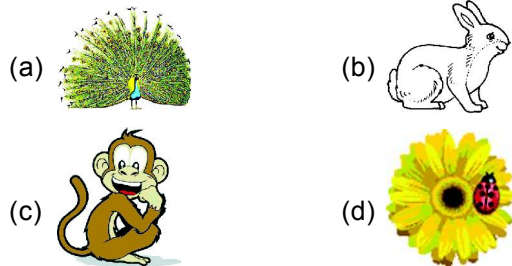


International English Olympiad Sample Paper

Time : 40 min

Question : 25

Q.1. Circle the right picture that start with **alphabet F**



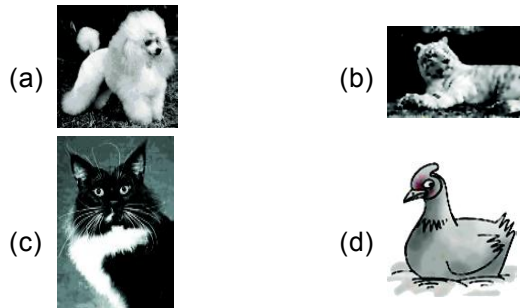
Q.2. Is it possible that an aeroplane can run on the road?
(a) yes (b) no (c) can't say (d) none of these

Q.3. Is it possible that a man can fly like a bird?
(a) yes (b) no (c) can't say (d) none of these

Q.4. Choose the correct missing letters, S _ND_ Y.
(a) a, b (b) d, a (c) u, a (d) a, n

Q.5. Choose the correct opposite word of NIGHT-
(a) sad (b) bus (c) day (d) happy

Q.6. Colour the picture that starts with alphabet D.



Q.7. One thing does not belong to others in the group. What is that?
(a) turnip (b) apple (c) tomato (d) pea

Q.8. Tick the same meaning for LARGE
(a) sick (b) tall (c) big (d) none of these

Q.9. Which of the following thing you do at first in the morning?
(a) drink milk (b) brush teeth
(c) Take bath (d) go to school

Class - 1

63

Q.10. What is the correct rhyming word for THINGS-
(a) near (b) tall (c) brings (d) none of these

Q.11. girl is cute. What should be the correct article?
(a) a (b) an (c) the (d) none of these



Q.12. Tick the correct flower name-

(a) rose (b) sunflower
(c) lotus (d) none of these



Q.13. Tick the correct name for the monument.

(a) Red Fort (b) Taj Mahal
(c) Lal Kila (d) none of these



Q.14. What is this animal called?

(a) Tiger (b) Lion
(c) Elephant (d) none of these

Q.15. Choose the correct letter in this sentence.

.....aj mahal is our monument.
(a) T (b) t (c) S (d) none of these



Q.16. Which is this cartoon character?

(a) Tweety (b) Tom and Jerry
(c) Mickey and miney (d) none of these

Q.17. My has two wheels. (Complete the sentence with right word)
(a) school (b) cycle (c) bus (d) none of these

Q.18. Tick at the correct spelling of the fruit-
 (a) aplle (b) apple (c) aplee (d) none of these

Q.19. What can fly? Tick the correct option.



- (a) (b)
 (c) both of these (d) none of these

Q.20. Who is happy?



- (a) (b)
 (c) Both (a) and (b) (d) none of these

INTERACTIVE SECTION

Q.21. See the picture and fill in the blank (?)

HE

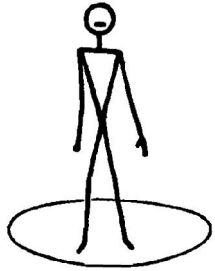


?



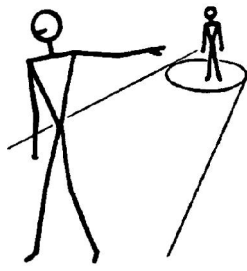
- (a) ME (b) SHE
 (c) YOU (d) None of the above

Q.22.



I am here

- (a) Where
 (c) They



He is ?

- (b) There
 (d) None of the above

Q.23. It is there.



They are there.



We are here.

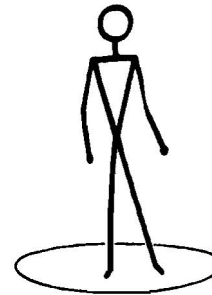


.....?.....are here.



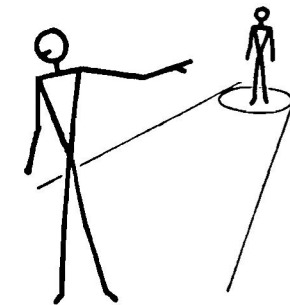
- (a) Them (b) That
 (c) They (d) None of the above

Q.24.



This is a man.

- (a) This
 (c) They



.....?..... is a man.

- (b) That
 (d) None of the above

Q.25.



His hat is on the table

- (a) on
- (c) over



He took it?..... the table

- (b) off
- (d) None of the above



ANSWERS

- | | | | | | | |
|---------|---------|---------|---------|---------|---------|---------|
| 1. (d) | 2. (b) | 3. (b) | 4. (c) | 5. (c) | 6. (a) | 7. (b) |
| 8. (c) | 9. (b) | 10. (c) | 11. (c) | 12. (a) | 13. (b) | 14. (c) |
| 15. (a) | 16. (a) | 17. (b) | 18. (b) | 19. (b) | 20. (a) | 21. (b) |
| 22. (b) | 23. (b) | 24. (b) | 25. (b) | | | |

