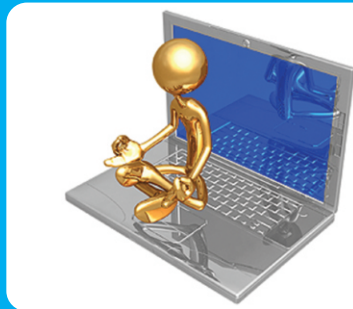


EtG

# OLYMPIAD EXPLORER



Workbook for

International **CYBER** Olympiad  
National/International Olympiads/Talent Search

Based on CBSE, ICSE, GCSE, State Board Syllabus & NCF (NCERT)

100's of Q's with answers

- Chapterwise Practice Q's
- Revision Q's
- Sample Paper



Class

3

## EDUHEAL FOUNDATION

### • LEARNING FOR LIFE

EduHeal Foundation conducts 5 Olympiads annually reaching  
• 4 Lakh + Students • 50,000 Coordinating Teachers and having  
in English / Maths / Science / Biotech / Computer & 300 R

PRIZES



WORKSHOP • TEACHER TRAINING PROG. • MAGAZINE/LAB GRANT • PRINCIPAL LEADERSHIP AWARD.

# Contents

S.No.	Chapters	Page No.
1.	Generations of Computers .....	1
2.	Hardware & Software .....	5
3.	Explore Keyboard .....	10
4.	Input & Output Devices .....	13
5.	Data Storage .....	19
6.	Familiarity with Windows .....	23
7.	Paint Brush .....	28
8.	Revision Questions .....	32
9.	ICO Sample Paper .....	44



## SYLLABUS GUIDELINES

**Based on CBSE, ICSE & GCSE Syllabus  
& NCF guidelines revised by NCERT.**

Generations of Computers; Hardware & Software; Explore Keyboard;  
Input & Output Devices; Data Storage; Familiarity with Windows;  
Paint Brush.



- Q.1.** Which of the following belongs to the first generation of Computer ?  
(a) IBM-400 (b) IBM 1401  
(c) IBM 370 (d) UNIVAC
- Q.2.** What hardware was used by first generation computers ?  
(a) Transistors (b) Valves  
(c) VLSI (d) ICs
- Q.3.** The first electronic digital computer contained ?  
(a) Electronic valves (b) Vacuum tubes  
(c) Transistors (d) Semiconductor memory
- Q.4.** Who is called the “grand father” of the computer ?  
(a) Blaise Pascal (b) Charles Babbage  
(c) Joseph Jacquard (d) Dr. Herman Hollerith
- Q.5.** The first mechanical computer designed by Charles Babbage was called :  
(a) Abacus (b) Processor  
(c) Calculator (d) Analytical engine
- Q.6.** The first generation computer system used :  
(a) Vacuum tubes (b) Transistors  
(c) Registers (d) Magnetic cores
- Q.7.** Most of the computers available today are known as :  
(a) 3rd generation computers  
(b) 4th generation computers  
(c) 5th generation computers  
(d) 4th & 5th generation computers
- Q.8.** Who among the following is known as the father of computer?  
(a) Charles Babbage (b) John Napier  
(c) Blaise Pascal (d) None of the above
- Q.9.** A computer provides :  
(a) Speed (b) Accuracy  
(c) time Saving (d) All of the above
- Q.10.** In 1943, an electromechanical computer was invented by Prof. Howard Aiken in U.S.A. was :  
(a) Mark I (b) Analytical engine  
(c) Hollerith's machine (d) Jacquards loom

- Q.11.** The first instrument developed for counting purpose was \_\_\_\_\_  
 (a) Abacus (b) Adding Machine  
 (c) Calculator (d) Computer
- Q.12.** The Abacus was invented by Egyptians in 450 BC. It consists of a \_\_\_\_\_  
 (a) Iron frame (b) Wooden frame  
 (c) Copper frame (d) Silver frame
- Q.13.** A calculating device invented in 1614 by John Napier, a Scottish mathematician, was \_\_\_\_\_  
 (a) Abacus (b) Napier's Bone  
 (c) Adding Machine (d) Calculator
- Q.14.** In 1942, Blaise Pascal made a machine for calculation was \_\_\_\_\_  
 (a) Adding Machine (b) Napier's Bone  
 (c) Abacus (d) Computer
- Q.15.** First calculating device to run on electricity was \_\_\_\_\_  
 (a) Adding Machine (b) Abacus  
 (c) Tabulating Machine (d) Computer
- Q.16.** Tabulating Machine was invented by an American Mathematician named \_\_\_\_\_  
 (a) John Napier (b) Blaise Pascal  
 (c) Herman Hollerith (d) Charles Babbage
- Q.17.** \_\_\_\_\_ machine had gears, wheels and dials for calculation in first time.  
 (a) Abacus (b) Napier's Bone  
 (c) Adding Machine (d) None of above
- Q.18.** In 1889, \_\_\_\_\_ was invented by Herman Hollerith.  
 (a) Calculator (b) Typewriter  
 (c) Tabulating Machine (d) Adding Machine
- Q.19.** Herman Hollerith's Machine is also known as \_\_\_\_\_  
 (a) Adding Machine (b) Tabulating Machine  
 (c) Analytical engine (d) Calculator
- Q.20.** Analytical engine was invented by \_\_\_\_\_  
 (a) Charles Babbage (b) Herman Hollerith  
 (c) Blaise Pascal (d) Napier's Bone

- Q.21.** \_\_\_\_\_ Introduced the first personal computer.  
 (a) IBM (b) Intel  
 (c) Wipro (d) Apple
- Q.22.** Fourth Generation computers were developed from \_\_\_\_\_  
 (a) 1955 onwards (b) 1964 onwards  
 (c) 1945 onwards (d) 1975 onwards
- Q.23.** First Generation computer have \_\_\_\_\_  
 (a) Efficiency & speed (b) Big Memory  
 (c) Artificial intelligence (d) None of the above
- Q.24.** Computer generation has been divided in \_\_\_\_\_  
 (a) 2 Generation (b) 4 Generation  
 (c) 6 Generation (d) 5 Generation
- Q.25.** The size of a computer in first generation was \_\_\_\_\_  
 (a) a size of TV (b) a size of Pen  
 (c) a size of Room (d) a size of Book
- Q.26.** The speed of first generation computer was \_\_\_\_\_  
 (a) High (b) Very high  
 (c) Slow (d) Very slow
- Q.27.** In second generation computer \_\_\_\_\_ were used in the place of vacuum tubes.  
 (a) Chips (b) Transistors  
 (c) Micro processor (d) Processor
- Q.28.** Second Generation computer were \_\_\_\_\_ compared to first Generation Computer.  
 (a) Faster and bigger (b) Slower and bigger  
 (c) Faster and smaller (d) Faster and bigger
- Q.29.** \_\_\_\_\_ were used in third generation of computers.  
 (a) Vacuum tube (b) Transistors  
 (c) Integrated circuits (d) Chips
- Q.30.** The most famous computers of the third generation were \_\_\_\_\_  
 (a) Univac (b) IBM 360  
 (c) IBM 370 (d) Both (b) & (c)
- Q.31.** Charles Babbage conceived the first computer. It was referred to as an \_\_\_\_\_  
 (a) Pattern Engine (b) Analytical Engine  
 (c) Mathematical Engine (d) Encoding Engine

- Q.32.** The four basic components found in Charles Babbage's design has each of the following except  
 (a) processing (b) control  
 (c) input (d) storage
- Q.33.** Which of the following was considered by many to be the first electronic digital computer?  
 (a) Colossus (b) UNIVAC I  
 (c) ENIAC (d) ABC Computer
- Q.34.** Which of the following is a true statement?  
 (a) Transistors were used in the UNIVAC I.  
 (b) The UNIVAC I was affordable in its day  
 (c) Both (a) and (b)  
 (d) None of the above statements is true
- Q.35.** Which one of the following would not be considered a portable computer?  
 (a) a notebook computer (b) a desktop computer  
 (c) a laptop computer (d) none of these
- Q.36.** Which of the following monitors has the least color depth?  
 (a) Hypertext (b) Gray-scale  
 (c) Flat screen (d) Monochrome
- Q.37.** One of the recent advances in technology is :  
 (a) Computer (b) Boat  
 (c) Bicycle (d) Wheel



## ANSWERS

1. (d) 2. (b) 3. (a) 4. (b) 5. (d) 6. (a) 7. (b) 8. (a)  
 9. (d) 10. (a) 11. (a) 12. (b) 13. (b) 14. (a) 15. (c) 16. (c)  
 17. (c) 18. (c) 19. (b) 20. (a) 21. (a) 22. (d) 23. (d) 24. (d)  
 25. (c) 26. (d) 27. (b) 28. (c) 29. (c) 30. (d) 31. (b) 32. (b)  
 33. (a) 34. (c) 35. (b) 36. (d) 37. (a)



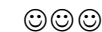
- Q.1.** The 3 functional elements of a digital computer are input device, output device and :
- (a) ALU (b) Register unit  
(c) CPU (d) Control unit
- Q.2.** ALU is called the..... of a computer.
- (a) Heart (b) Master dispatcher  
(c) Primary memory (d) All of the above
- Q.3.** The basic components of a modern digital computer are :
- (a) CPU (b) Input device  
(c) Output device (d) All of the above
- Q.4.** A third and last component of CPU is :
- (a) ALU (b) Supervisory-control unit  
(c) Input device (d) Register unit
- Q.5.** Which is the most important part of a computer ?
- (a) Keyboard (b) Memory unit  
(c) Register unit (d) CPU
- Q.6.** The CPU is made up of control unit ALU and :
- (a) Memory (b) Input-output  
(c) Register unit (d) All of the above
- Q.7.** The brain of any computer system is :
- (a) ALU (b) Memory  
(c) CPU (d) Control unit
- Q.8.** Hardware is :
- (a) Nails, bolts and screws.  
(b) The mechanical and electronic components of your computer system.  
(c) Another name for computers and peripheral devices.  
(d) All of the above.
- Q.9.** The three main parts of a computer are :
- (a) Hardware, manuals and disks  
(b) Software, software and more software  
(c) Hardware, software and an operating system  
(d) Memory, a micro-processor and peripherals
- Q.10.** What is the active application ?

- (a) The application that is at the DOS prompt  
 (b) The application that is at the OS/2 prompt  
 (c) The application that is receiving the action of your commands  
 (d) The application currently using the micro-processor.
- Q.11.** What are scroll bars ?  
 (a) Bars that appear in a windows when there is more information available  
 (b) Bars that appear as information scrolls down the screen  
 (c) Bars that have a scroll-type design in them  
 (d) All of the above
- Q.12.** What happens when you maximize an application ?  
 (a) It takes up the full screen  
 (b) It shrinks down to an icon  
 (c) It is restored to its former position and size  
 (d) It runs better than ever
- Q.13.** What happens when you minimize an application ?  
 (a) It takes up the full screen  
 (b) It shrinks down to an icon  
 (c) It is restored to its former position and size  
 (d) It runs worse than ever
- Q.14.** Clicking on mouse button once is called ?  
 (a) Single click (b) Double Click  
 (c) Drag (d) Drop
- Q.15.** \_\_\_\_\_ displays the name of the windows that is open on the screen.  
 (a) Title bar (b) Menu bar  
 (c) Scroll bar (d) Task bar
- Q.16.** \_\_\_\_\_ is located at the bottom of the desktop and contains the start button on the lower-left corner.  
 (a) Title bar (b) Task bar  
 (c) Menu bar (d) Status bar
- Q.17.** Notepad, wordpad and Paint are listed in \_\_\_\_\_  
 (a) Accessories (b) Run  
 (c) Document (d) Find
- Q.18.** Starting the computer is called :  
 (a) Switching on (b) Booting up  
 (c) Dialling up (d) Speed up

- Q.19.** Full form of ALU is as follows :  
 (a) Arithmetic & Logical Unit  
 (b) Arithmetic Logical Unity  
 (c) Accessing Logical Unit  
 (d) None of the above
- Q.20.** To find the details of disk(s), drives are available in your computer; press mouse button twice on \_\_\_\_\_.  
 (a) My computer (b) My documents  
 (c) Recycle bin (d) Network neighbourhood
- Q.21.** Computers are being used in :  
 (a) Railway Reservation (b) Maintaining Records  
 (c) Printing Documents (d) All of the above
- Q.22.** Which statement is not correct ?  
 (a) A computer never thinks on its own like a human being.  
 (b) Computer lacks imagination and humour as compared to human.  
 (c) A computer is useless without instructions  
 (d) A computer can teach us humanity.
- Q.23.** Computers are used for:  
 (a) Doing calculations (b) entertainment  
 (c) Printing documents (d) All of the above
- Q.24.** A common reason for changing an information system is :  
 (a) New technology (b) New requirements  
 (c) Problems in the existing system  
 (d) All of the above
- Q.25.** Computer are being used in :  
 (a) Doing repetitive Tasks (b) Maintaining records  
 (c) Printing documents (d) All of the above
- Q.26.** Keyboard, Mouse and Monitor is a part of computer.  
 (a) Hardware (b) software  
 (c) Both (a) and (b) (d) Can't be said
- Q.27.** Keyboard looks like a \_\_\_\_\_  
 (a) TV (b) Carrom board  
 (c) Typewriter (d) Desk
- Q.28.** A hardware of computer can be \_\_\_\_\_  
 (a) seen (b) touched  
 (c) both (a) & (b) (d) none of these

- Q.29.** Working with a computer, we requires :
- (a) Hardware (b) Software  
(c) Both (a) & (b) (d) None of these
- Q.30.** A computer can be used in \_\_\_\_\_
- (a) Hospital (b) Airport  
(c) Railway Station (d) All Places
- Q.31.** Computer helps us for \_\_\_\_\_
- (a) Making decision (b) Calculation  
(c) Giving suggestion (d) none of these
- Q.32.** Computers are in scientific laboratories for :
- (a) Forecasting weather (b) Deposit cash  
(c) Reservation (d) ECG
- Q.33.** \_\_\_\_\_ are used to provide information about the arrival and departure time of aeroplanes.
- (a) Calculator (b) Computers  
(c) Typewriter (d) Radio
- Q.34.** The information given to a computer is called \_\_\_\_\_
- (a) H/W (b) Data  
(c) File (d) Keyboard
- Q.35.** A part of computer used to input is called \_\_\_\_\_
- (a) Input device (b) Output device  
(c) Website (d) both (a) & (b)
- Q.36.** The part of computer that we can see or touch is called ?
- (a) Hardware (b) Program  
(c) Software (d) None of these
- Q.37.** \_\_\_\_\_ is software that is used as a drawing tool.
- (a) MS-word (b) Basic  
(c) Windows (d) Paint Brush
- Q.38.** A computer we use for personal use is called ?
- (a) AC (b) PC  
(c) DC (d) IC
- Q.39.** We should clean a computer using \_\_\_\_\_
- (a) Hard brush (b) Soft & dry cloth  
(c) Dirty cloth (d) Soap water
- Q.40.** Speed of computer is measured in \_\_\_\_\_
- (a) seconds (b) minutes  
(c) Hours (d) Megahertz

- Q.41.** A computer's flexibility is hidden in its \_\_\_\_\_
- (a) Hardware (b) Software  
(c) Input (d) Information
- Q.42.** Which of the following provides instructions for transforming input data into necessary output ?
- (a) Hardware (b) Programs  
(c) Software (d) Both (b) and (c)
- Q.43.** The physical parts of a computer system are referred to as :
- (a) features (b) software  
(c) programs (d) hardware
- Q.44.** If a computer is performing arithmetic or logical operations, it is \_\_\_\_\_
- (a) receiving information (b) processing information  
(c) storing information (d) retrieving information
- Q.45.** A computer user who steals information from other people's computers for bad purposes is called a \_\_\_\_\_
- (a) criminal (b) technologist  
(c) hacker (d) programmer
- Q.46.** A software package obtained without licence is said to be
- (a) pirated (b) duplicated  
(c) original software (d) shared
- Q.47.** A software package which can be copied without paying for it is called \_\_\_\_\_
- (a) pirated software (b) shareware  
(c) original software (d) freeware
- Q.48.** We can improve computer security by the use of \_\_\_\_\_
- (a) user names (b) passwords  
(c) IC numbers (d) account number



### ANSWERS

1. (c) 2. (c) 3. (d) 4. (b) 5. (d) 6. (a) 7. (c) 8. (d)  
9. (c) 10. (c) 11. (a) 12. (a) 13. (b) 14. (a) 15. (a) 16. (b)  
17. (a) 18. (b) 19. (a) 20. (a) 21. (d) 22. (d) 23. (d) 24. (d)  
25. (d) 26. (a) 27. (c) 28. (c) 29. (c) 30. (d) 31. (b) 32. (a)  
33. (b) 34. (b) 35. (a) 36. (a) 37. (d) 38. (b) 39. (b) 40. (d)  
41. (b) 42. (d) 43. (d) 44. (b) 45. (c) 46. (a) 47. (a) 48. (b)





- Q.1.** In a microcomputer keyboard if you discover a mistake after inputting data with the enter key, which key will have to be pressed to retype the data ?  
 (a) Control key (b) Insert key  
 (c) Backspace key (d) Tab key
- Q.2.** What is the function of the 'home key' in a microcomputer qwerty keyboard ?  
 (a) To capitalize letters (b) To reposition the cursor  
 (c) To interrupt executions (d) To cancel the entry
- Q.3.** There is only one key in the keyboard of a computer which is without any making and is also the widest key of the keyboard. What is the name of this key ?  
 (a) Shift key (b) Enter key  
 (c) Backspace key (d) Space bar
- Q.4.** \_\_\_\_\_ is used to write capital letters.  
 (a) Tab key (b) Caps lock key  
 (c) Space bar (d) Page up key
- Q.5.** You can put blank space with \_\_\_\_\_  
 (a) Shift key (b) Enter key  
 (c) Space bar (d) Caps lock
- Q.6.** Which key is used to start New Line in windows environment?  
 (a) Enter key (b) Space bar  
 (c) Full stop (d) Back space
- Q.7.** What is this symbol '#' called ?  
 (a) Hash (b) Ampersand  
 (c) Caret (d) Dollar
- Q.8.** Which are the alphabet keys ?  
 (a) a, b, c, d (b) 0, 1, 2, 3, 4  
 (c) F1, F2, F3, F4 (d) →, ↑, ←, ↓
- Q.9.** To switch off the computer you are to first click \_\_\_\_\_.  
 (a) Shut Down (b) Display  
 (c) Start button (d) My Computer
- Q.10.** How many function keys are in a standard Keyboard ?  
 (a) 10 (b) 12  
 (c) 18 (d) 11
- Q.11.** Which key is used to put a space between letters, numbers and words ?

- (a) Caps lock key (b) Space bar  
 (c) Delete key (d) Shift key
- Q.12.** \_\_\_\_\_ is used to erase the letter to the right of the cursor.  
 (a) Delete key (b) Backspace key  
 (c) Enter key (d) Space bar
- Q.13.** Which of the following is a toggle key?  
 (a) Caps lock key (b) Shift key  
 (c) Esc key (d) Ctrl key
- Q.14.** Which statement is correct ?  
 (a) Caps key is used to change the case (upper or lower) of text  
 (b) Shift key always works with some other key  
 (c) Normally there are two shift keys in the keyboard  
 (d) All of these
- Q.15.** Which key is most commonly used to execute the commands?  
 (a) Space bar (b) Enter key  
 (c) Shift key (d) Tab key
- Q.16.** Name the key, which deletes a character forward to the cursor position.  
 (a) Delete key (b) Back Space key  
 (c) Tab key (d) Space bar
- Q.17.** Which key is used to leave the space in between text ?  
 (a) Space bar (b) Enter key  
 (c) Shift key (d) Control key
- Q.18.** Name the longest key on the keyboard ?  
 (a) Tab key (b) Shift key  
 (c) Enter key (d) Space bar
- Q.19.** What is this symbol 'π' is called ?  
 (a) Pie (b) Slash  
 (c) Hash (d) Ampersand
- Q.20.** \_\_\_\_\_ symbol in not contained in standard keyboard.  
 (a) @ (b) &  
 (c) ' | ' (d) ÷
- Q.21.** The number key are arranged above the alphabet keys & also on the \_\_\_\_\_.  
 (a) above the function key  
 (b) Left side of the keyboard  
 (c) Right side of the keyboard  
 (d) below the spacebar key

- Q.22.** \_\_\_\_\_ is used to move around on the screen.  
 (a) Direction keys (b) Spacebar key  
 (c) Number keys (d) Punctuation key
- Q.23.** To enter the upper symbol of a key, we hold \_\_\_\_\_ while pressing the symbol key.  
 (a) Tab key (b) Caps lock key  
 (c) Shift key (d) Space bar key
- Q.24.** If caps lock is on, all letter that you enter will appear in \_\_\_\_\_.  
 (a) Small on the screen (b) Capital on the screen  
 (c) Specific symbol (d) Binary code
- Q.25.** Function keys labelled F1, F2, F3 etc. at \_\_\_\_\_.  
 (a) Below of the keyboard  
 (b) Top of the keyboard  
 (c) Left side of the keyboard  
 (d) Right side of the keyboard
- Q.26.** The powerful key that lets you exit a program :  
 (a) Shift key (b) End key  
 (c) Home key (d) Escape key
- Q.27.** The numeric key board can only be used after pressing :  
 (a) Number lock key (b) Ctrl key  
 (c) Alt key (d) Scroll lock key
- Q.28.** The blinking vertical key line on monitor is called ?  
 (a) Cursor (b) Pen  
 (c) Line (d) Pointer
- Q.29.** 1, 2, 3, 4 are called ?  
 (a) Number Keys (b) Letter Keys  
 (c) Function Keys (d) Symbol keys
- Q.30.** There are \_\_\_\_\_ numeric keys on the Keyboard.  
 (a) 10 (b) 9  
 (c) 11 (d) 8



## ANSWERS

1. (c) 2. (b) 3. (d) 4. (b) 5. (c) 6. (a) 7. (a) 8. (a)  
 9. (c) 10. (b) 11. (b) 12. (a) 13. (b) 14. (d) 15. (b) 16. (a)  
 17. (a) 18. (d) 19. (a) 20. (d) 21. (c) 22. (a) 23. (c) 24. (b)  
 25. (b) 26. (d) 27. (a) 28. (a) 29. (b) 30. (a)



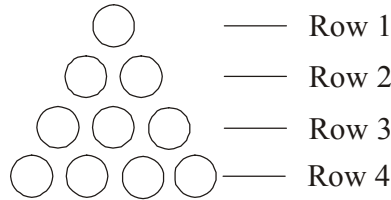
## INTERNATIONAL CYBER OLYMPIAD (ICO) SAMPLE PAPER

Total duration : 40 Minutes


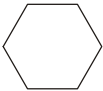

Total Marks : 25

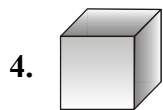
### SECTION - A GENERAL IQ.

- Puppies were sleeping under a blanket. Poonam counted 28 legs. What should she do to find out how many puppies are under the blanket.  
(a) Subtract 4 from 28 (b) Multiply 28 by 4  
(c) Divide 28 by 4 (d) None of these
- Nikhil set up 4 rows of balls



Geeta wants to set up 7 rows of balls. How many total balls she will need to set up 7 rows of balls.

- (a) 10 (b) 28  
(c) 50 (d) None of these
- I have more than 3 vertices, and I have fewer than 6 sides. Which shape am I.  
(a)  (b)   
(c)  (d) None of these

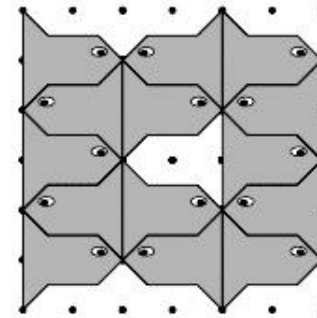




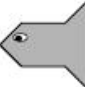
4.

The shape given above will have how many edges?

- (a) 7 (b) 8 (c) 9 (d) 12

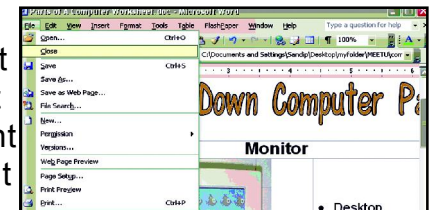
- Which figure fits into the space best ?



- (a)  (b)   
(c)  (d) None of these

### SECTION - B COMPUTERS

- The letters in the first row of the alphabets on the keyboard are in the order  
(a) QWERTY (b) QEWRIRY  
(c) RTEQWY (d) YRTEWQ
- The Third Generation computers used  
(a) Vacuum Tubes (b) Transistors  
(c) Integrated Circuits (d) Microprocessor
- Who is the 'Father of Computer' ?  
(a) Napier (b) Blaise Pascal  
(c) Herman Hollerith (d) Charles Babbage
- As shown in the window what Sakshi wants to do with the document ?  
(a) Save the document  
(b) Print the document  
(c) Close the document  
(d) Delet the document



10. What is the full form of CD ?

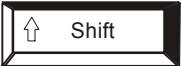



- (a) Compact Disk      (b) Circular Disk  
(c) Closed Disk      (d) Correct Disk

11. In Microsoft Excel what name is given to the space where a row and a column meet in a spreadsheet ?

- (a) Cell      (b) Block  
(c) Row      (d) Column.




12. Which of the following statement is incorrect ?

- (a) Computers can store data.  
(b) Computers cannot do calculations.  
(c) Computer can be used to design a greeting card.  
(d) Computer is a machine.

13.  ,  ,  ,  are known as

- (a) Cursor Keys      (b) Alphabet keys  
(c) Special keys      (d) Function keys





14. Which of the following icons helps you to minimize (decrease) the window ?

- (a)       (b)   
(c)       (d) None of these.

15. Ctrl + N command in a paint window is to

- (a) Start a new drawing      (b) Save a drawing  
(c) Erase a drawing      (d) Open a drawing.

16. To cancel a command which of the following key can be used ?

- (a)       (b)   
(c)       (d) 

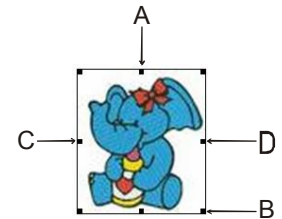
## SECTION - C

## INTERACTIVE SECTION

17. Which of the following represents eraser in Paint Software ?

- (a)       (b)       (c)       (d) 

18. When Pratyush first inserted the graphic of the cartoon it was too large. He wants to reduce its size. Which arrow is pointing to the handle with which he can reduce the length and breadth in equal proportion.

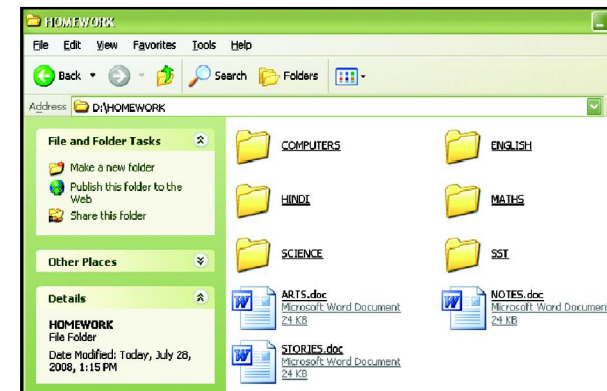


- (a) Arrow A      (b) Arrow C  
(c) Arrow B      (d) Arrow D.

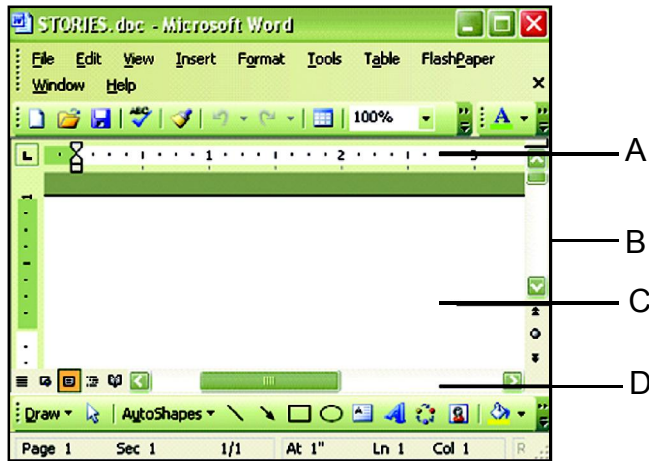
19. Which of the following key does the same function as right click of mouse does ?

- (a)       (b)   
(c)       (d) 

Use picture to answer Q 20 and 21:

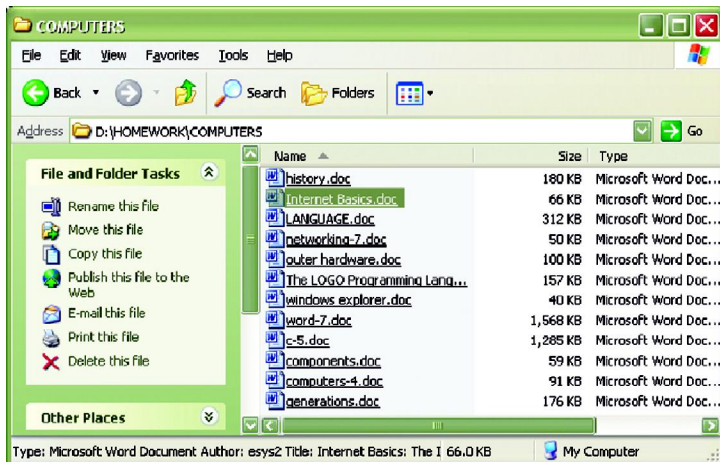


20. How many folders are there inside the 'Homework' folder ?  
 (a) 7 (b) 5 (c) 8 (d) 6
21. 'STORIES' is an MS Word document. Statement is  
 (a) True (b) False  
 (c) Can't say (d) None of these
22. What is 'B' in the given figure ?

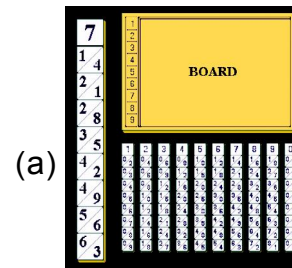


- (a) Vertical Scroll Bar (b) Horizontal Scroll Bar  
 (c) Straight Scroll Bar (d) Diagonal Scroll Bar

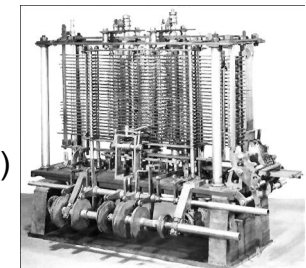
See following window and answer question 23 and 24.



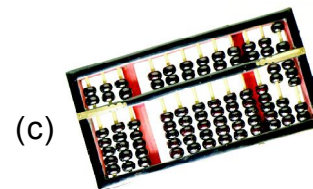
23. How many .doc files are seen in the window?  
 (a) 5 (b) 11  
 (c) 12 (d) None of these.
24. Which file is selected ?  
 (a) Computer 4 (b) Internet Basics  
 (c) Windows Explorer (d) None of these.
25. Which of the following is the foremost ancestor of present day computers ?



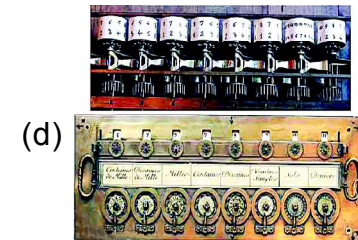
Napier Bone



Analytical Engine



Abacus



Pascaline



**ANSWERS**

1. (c) 2. (b) 3. (a) 4. (d) 5. (c) 6. (a) 7. (a) 8. (d)  
 9. (c) 10. (a) 11. (a) 12. (b) 13. (c) 14. (a) 15. (a) 16. (c)  
 17. (c) 18. (c) 19. (b) 20. (d) 21. (a) 22. (a) 23. (c) 24. (b)  
 25. (c)

