

Science Olympiad Level 2

Sections	Q1	Q2	Q3	Q4	Q5	Q6	Q7	Q8	Q9	Total
Marks obtained										

General Instructions:

1. Duration of the exam is 45 minutes.
2. The exam should be answered using pencil on the question paper itself.
3. Please read the questions carefully before answering them.
4. Fill in your details on this page before the exam begins.

Student Details:

Name _____

Std _____

Honour Code:

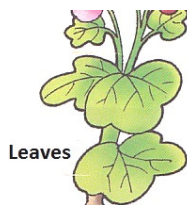
I pledge that I will not copy or take help from my friends/teachers while answering questions during this exam.

Signature/Name _____

Q1. Cross the odd one out.

(5 mks)

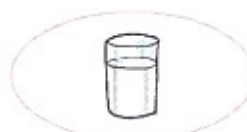
1. Parts of a plant:



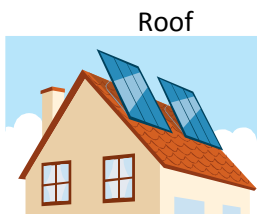
Soap



2. Liquids:



3. Parts of a house:



kennel

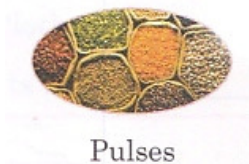


Door



window

4. Body building foods:







5. Use of wood:



Q2. Match the following.

(4 mks)

 <p>1. <i>Dog</i></p>	<p>a. gives us wool</p>
 <p>2. <i>Cow</i></p>	<p>b. carries heavy load</p>
 <p>3. <i>Donkey</i></p>	<p>c. gives us milk</p>
 <p>4. <i>Sheep</i></p>	<p>d. guards our home</p>

Q3. Classify the following.

(4 mks)

1. money plant, pumpkin, grape-vine, watermelon, cucumber, pea plant

a. climbers -

b. creepers -

2. sweater, raincoat, coat, gumboot, umbrella, shawl

a. winter wear -

b. monsoon wear -

3. rice, chickpeas, green peas, corn, wheat, kidney beans

a. cereals -

b. pulses -

4. granite, rocksalt, marble, slate, shale, sandstone

a. hard rock -

b. soft rock -

Q4. Answer the questions based on facts you have learnt? (8 mks)

1. Why do many people live in plains?

2. From which plants do we get chocolate?

3. What is the sun made up of?

4. Name any two parts of our body which do not have any bones?

5. What do insects like mosquitoes and lice eat?

6. Which muscles do you use when you ride your bicycle?

7. What does air contain?

8. How is water taken from under the ground?

Q5. Tick the correct option.

(5 mks)

1. The teacher asked the students to give an example of a tree that doesn't have any branches, which one is correct -

a. banyan tree

b. peepal tree

c. coconut tree

2. Rinku runs a parlour, she asked her friend to get some leaves to make hair colour, which leaves her friend should get –

- a. mint
- b. basil
- c. henna

3. Samir was passing by a very dry and sandy area with very few trees, what area did Samir pass by –

- a. a dessert
- b. a coast
- c. a forest

4. In the human body, all the bones together form the –

- a. brain
- b. skeleton
- c. muscles

5. Tommy's mother asked him to eat healthy food so he decided to eat –

- a. a vegetable sandwich
- b. a burger
- c. potato chips

Q6. Give Reasons.

(6 mks)

1. We cannot look straight at the sun -

2. Breathing impure air makes us ill -

3. We must not lean out of the bus while travelling -

4. We must always maintain a good posture -

Q7. With the help of activities conducted earlier, underline the correct option.

(4 mks)

1. When your hand blocks the path of a torch beam of light a shadow is formed on the wall, the position of the shadow is

a. opposite the torch beam

b. on the same side as the torch beam

c. between the torch beam and the hand

2. When water is kept in the refrigerator, it turns into ice –

- a. water evaporates on cooling
- b. water freezes on cooling
- c. water condenses on cooling

3. Even though the bones of our hands are long, hard and strong, we can move our hand when we want to lift a book -

- a. because the bones are hard but flexible
- b. because the bones are hard but the brain makes them flexible
- c. because the bones are attached to muscles which enable them to move

4. The contractor asked Rocky to get the stones required to fit as tiles for their new apartment, what stones must rocky get –

- a. granite
- b. chalk
- c. rock salt

Q8. Explain.

(2 mks)

1. Air takes up space -

2. You must brush your teeth twice a day -

Q9. Draw the shadow the below object makes on the screen. (2 mks)

