

ROLL NO.	
NAME	

APEEJAY SCHOOL, PITAMPURA
SUMMATIVE ASSESSMENT-I
TERMINAL EXAM 2016-17
CLASS – VII
SOCIAL SCIENCE

TIME ALLOWED: 3 hrs

Maximum Marks: 80

The question paper consists of three parts :

SECTION A: History

SECTION B: Geography

SECTION C: Civics

GENERAL INSTRUCTIONS :

- | | |
|-------------|--|
| I. | Answer to the question carrying 2 marks should not exceed 30 words. |
| II. | Answer to the question carrying 3 marks should not exceed 50 words. |
| III. | Answer to the question carrying 4 marks should not exceed 80 words. |
| IV. | Write the same question number as given in the question paper while answering the question. |
| V. | Attach / paste the maps carefully inside the answer sheet. |
| VI. | The question paper consists of 24 questions. |

SECTION - A

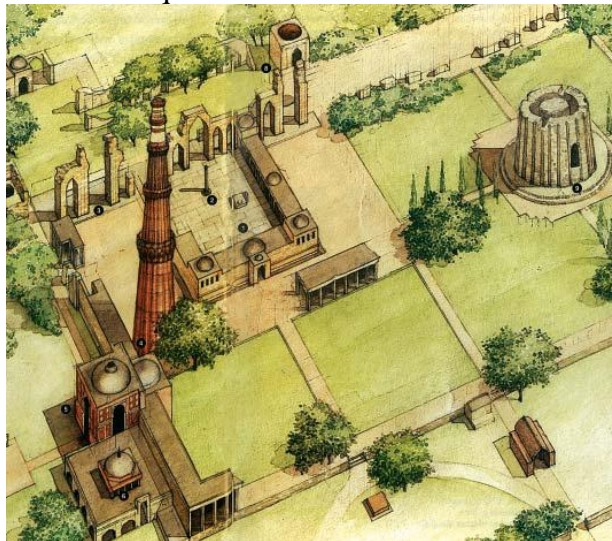
1. Define the following terms: (1x2=2 marks)
 - a. Nagaram
 - b. Cartography
2. Answer the following questions in one word:- (0.5X6=3marks)
 - a) Name the first woman to become the sultan
 - b) A sermon read during the Friday prayer.
 - c) Delhi became the capital of this kingdom for the first time.
 - d) The author of Akbarnama
 - e) The leader of the Mongols who invaded India during the sultanate period.
 - f) Which tradition of succession followed by the early Mughals?
3. What are prashastis and why don't the historians rely much on the prashastis? (2 marks)

4. List any two technological changes associated with the period between 700 and 1750? (2 marks)
5. Who was the first Mughal emperor? Whom did he defeat in the First battle of Panipat? (2 marks)
6. What was the relationship between the Mansabdar and the Jagir? (3 marks)
7. Mention any three difficulties that the historians face in using Manuscripts? (3 marks)
8. Read the following passage and answer the questions given below: (4x1 = 4marks)

“Muhammad Tughluq’s administrative measures were a failure. His campaign into Kashmir was a disaster. He then gave up his plans to invade Transoxiana and disbanded his large army. Meanwhile his administrative measures created complications. The shifting of people to Daulatabad was resented. The raising of taxes and famine in Ganga-Yamuna belt led to widespread rebellion. And finally, the token currency had to be recalled.”

- a) In which area did Muhammad Tughlaq raise the taxes to fulfill his dream?
- b) Why was Muhammad-Tughlaq’s measure to raise taxes resented by the people?
- c) What was the token currency made up of?
- d) To which place did Muhammad-bin- Tughlaq shift his capital from Delhi?

9. Look at the given picture and answer the questions that follows. (4x1=4 marks)



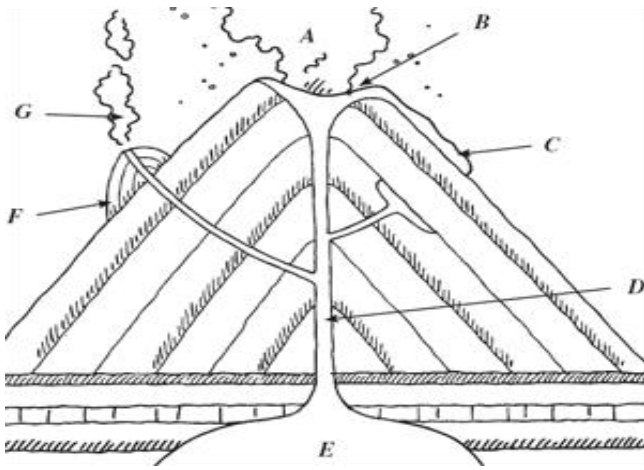
- a) Identify the minaret given in the picture.
- b) Which mosque is located in the complex?
- c) To which dynasty do this monument belongs?
- d) Who started the construction of this monument?

10. Name and mark the following on the political map of India. (5 marks)

- a) The city that was to be captured through the tripartite struggle.
- b) The capital of the Rashtrakuta kingdom.
- c) The kingdom to which Rajaraja belonged.
- d) Besides the Rashtrakutas and Pratiharas, the kingdom that was involved in the tripartite struggle.
- e) A city where Rajaraja and Rajendra built splended temples.

SECTION – B

11. Define the following terms: (2 x 2 = 4 marks)
a) Ecosystem b) Minerals
12. Give reasons for the following: (2 x 2 = 4 marks)
a) The earth is like an onion.
b) Some rocks have a shape of a mushroom.
13. Name the following: - (5X1=5marks)
a) The highest waterfall in South America-
b) On this day World Environment Day is celebrated every year-
c) The radius of the earth-
d) The most plentiful gas in the air-
e) The depositional feature of a glacier-
14. What is insolation? How does it get affected as we move from the equator towards the poles? (2 marks)
15. Write any two points of differences between Weather and Climate. (2 marks)
16. What are igneous rocks? Name its types with examples each. (1+2=3 marks)
17. What is atmosphere? Name its five layers. (0.5+2.5=3 marks)
18. What is Biosphere? Name its two major components. (2 marks)
19. Label the following diagram: - (5X1=5 marks)
A- _____ D- _____
B- _____ E- _____
C- _____



SECTION – C

20. Define the following terms:

(4x2=8)

- | | |
|------------------------------|---------------------|
| a) Communicable diseases | c) Constitution |
| b) Universal Adult Franchise | d) Medical tourists |

21. Name the following: -

(1X4=4 marks)

- The first Indian State to introduce the Midday meal scheme-
- The healthiest country in South America-
- A place where people are first brought in and treated in a hospital without being admitted to any special ward-
- An African- American Woman who started the Civil Rights Movement.

22. State any two positive effects of the Midday Meal Scheme.

(2 marks)

23. Give any three points of difference between Private healthcare system and Public healthcare system?

(3marks)

24. State any three provisions that have been made in the Constitution to ensure Equality.

(3 marks)