

PRACTICE SET 1

A Whole Content Based Test for Class 6th Reasoning Asiad

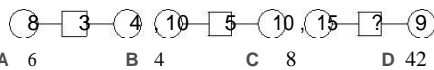
1. Find the next term in the series $7, 11, 17, 25, 35, ?$
 A 45 B 47 C 49 D 51

2. HJL is related to JMP, in the same way as OQS is related to
 A PSV B MHJ C QTW D RUX

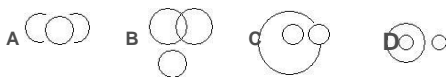
3. The letter of the words given in each of the four options have been jumbled up. Identify the word in the option for the clue given below.

‘A week day’
 A ACMRH B AOTDY C OMDANY D LOHIYAD

4. Which number will replace the question mark?



5. Which of the following diagram indicates the best relation amongst mango, vegetable and fruits?



6. Select the correct mirror image of the following NAME25

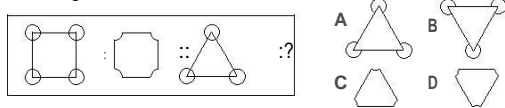
A NAME25 B NAME25 C 52E MAN D 25 MENA

7. If ‘ \times ’ means ‘|’, ‘+’ means ‘ \cdot ’, ‘-’ means ‘+’ and ‘|’ means ‘ \cdot ’, then $125 \cdot 25 + 20 - 80 = ?$
 A 180 B 90 C 200 D 20

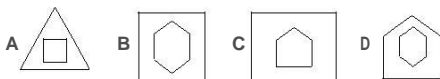
8. If ‘X’ is the wife of ‘Y’, ‘Y’ is the brother of ‘Z’ and ‘P’ is the father of ‘Z’, then how is ‘P’ related to ‘X’?

A Aunt B Brother
 C Father-in-law D Sister

9. Which figure completes the second pair in the same way as first pair?



10. Choose the figure which is different from others.



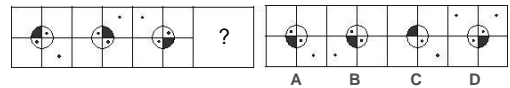
11. Five children are sitting on a bench. P is to the left of Q and to the right of R. S is to the right of Q. T is between Q and S. Then, whose position is fourth from the right?

A R B Q
 C S D P

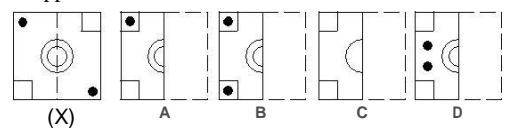
12. Find the one which does not belong to the group.

A Tail B Hale
 C Nail D Sail

13. Find the next figure in the series given below.



14. If the following transparent sheet with a certain design is folded along the dotted line, then how will it appear

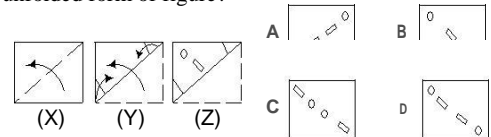


15. Count the number of straight lines in the figure given below.

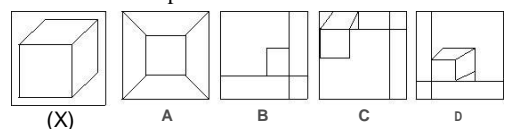


A 12
 B 16
 C 17
 D 20

16. Consider the figures (X) and (Y) showing a sheet of paper folded and punched in Fig. (Z). Select the figure, which will most closely resemble the unfolded form of figure?



17. In which of the following options, Fig. (X) is embedded as its part?

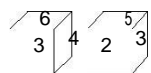


18. Ram is facing East. He turn 135° in clockwise direction and then 180° in anti-clockwise direction. Which direction he is facing now?

A East B North
 C North-East D South-West

19. If in a certain code, HAPPY is coded as YPPAH, how is TEACH coded in that code?

A HCAET B AETHC
 C HCEAT D EACTH



20. Two positions of the same dice are shown. Which digit will appear on the face opposite to the face having number 3?

A 2 B 5 C 4 D 1