

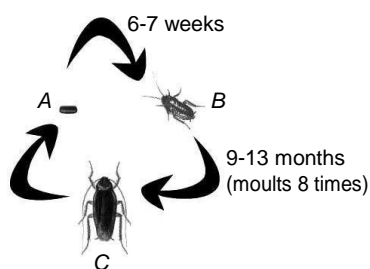
PRACTICE SET 1

A Whole Content Based Test for Class 4th Science Asiad

1. Which of the following is wrongly matched with their group?

- (a) Ants–Colony (b) Cows–Herd
(c) Owl–Parliament (d) Deer–Pride

2. Given below is the life cycle of cockroach. Some parts are missed out to be labelled. Label them, so as to complete the diagram.



CODES

- | A | B | C |
|-----------|-------|-------|
| (a) Eggs | Nymph | Adult |
| (b) Nymph | Eggs | Adult |
| (c) Adult | Nymph | Eggs |
| (d) Eggs | Adult | Nymph |

3. If we do not take care of our mouth, we can get even toothache. Arrange following steps causing toothache in correct sequence.

- I. Acid creates cavity in teeth causing toothache.
II. Bits of food sticks to the tooth.
III. Germs salt (bacteria) grow in the mouth. IV. Germs breakdown the food particles which produces acid.

CODES

- (a) II, III, IV, I (b) I, IV, III, II
(c) II, IV, III, I (d) IV, II, III, I

4. As we all know that digestion of food begins in mouth itself. Match correctly the different processes that take place in mouth to aid digestion.

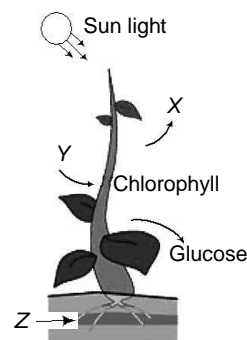
- A. Teeth (i) Softens the food to a pulp.
B. Saliva (ii) Pushes bits of food to food pipe.
C. Tongue (iii) Break up the food into smaller particles.

CODES

- | A | B | C |
|-----------|-------|-------|
| (a) (iii) | (ii) | (i) |
| (b) (i) | (iii) | (ii) |
| (c) (i) | (ii) | (iii) |
| (d) (ii) | (i) | (iii) |

DIRECTION (Q.Nos. 5-6) Carefully study the diagram drawn by Keshav and answer the following questions.

'Keshav studied photosynthesis process in the class and drew the diagram, but he missed out labelling few components'.



5. What does the arrow Z represent?

- (a) Release of water and minerals to the soil
(b) Absorption of water and minerals from the soil by roots
(c) Absorption of carbon dioxide from soil
(d) Release of oxygen into the atmosphere

6. Absorption of carbon dioxide and release of oxygen is represented by which arrow?

- (a) X and Y
(b) Y and X
(c) Y and Z
(d) Z and X

7. Weight of an object on Moon is 1/6 of the Earth. Does mass of an object also be different on Moon with respect to Earth?

- (a) Yes, because it also depends on the gravity
(b) No, because Earth and Moon are of same size
(c) Yes, because weight and mass are same for an object
(d) No, because it does not depend on the gravity

8. Match the following animals with their shelters.

- A. Earthworm (i) Stable
B. Hippopotamus (ii) Nest on tree
C. Horses (iii) Under the ground
D. Woodpecker (iv) Land and water

CODES

- | A | B | C | D |
|-----------|-------|-------|-------|
| (a) (i) | (ii) | (iii) | (iv) |
| (b) (ii) | (iii) | (iv) | (i) |
| (c) (iii) | (iv) | (i) | (ii) |
| (d) (iv) | (i) | (ii) | (iii) |

9. Read the following statements and choose the correct option.
- In big cities and towns, people live in pucca houses.
 - Kuchcha houses of villages do not need to be repaired often.
 - Dharavi in Mumbai is one of the largest slum in Asia.
 - Multistoreyed building is an ideal breeding ground for mosquitoes and flies.

CODES

	I	II	III	IV
(a)	T	T	F	F
(b)	F	F	T	T
(c)	T	F	T	F
(d)	F	T	F	T

10. Look at the picture and predict the best use of this biodegradable dried leaves?

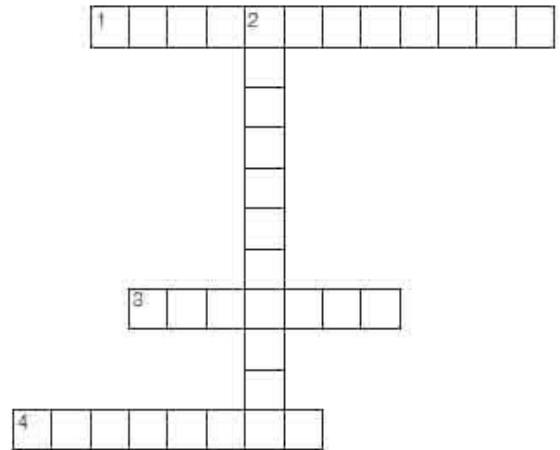


Dried leaves

- Burnt these leaves
 - Leaves can be used to make manure
 - Leaves can be thrown in open air
 - Leaves are useless
11. Read the following statements and choose correct option based on these statements.
- STATEMENT A** Satellites are used to know about the weather.
- STATEMENT B** Satellites are used to know the area of land and water.
- STATEMENT C** Satellites are used for distant communication.
- Statements A and B are correct, statement C is incorrect
 - All statements are correct
 - Statements A and C are correct; statement B is incorrect
 - Statements B and C are correct; statement A is incorrect
12. When we burn incense sticks in one corner of the house, we can smell it easily in all other corners of the house. What is responsible for this?
- Gases flow easily and fill the entire space available, so taking smell of incense stick in all the corners of house
 - Water vapours in the atmosphere moves and takes the smell of incense sticks in all the corners of the room
 - Because we carry the incense sticks to all the corners of the house
 - All of the above

DIRECTION (Q.Nos. 13-14) We have two sets of teeth during our lifetime. One is milk teeth and the other is permanent teeth.

13. What is the number of milk teeth and permanent teeth in humans?
- | | |
|-------------|--------------|
| (a) Milk:20 | Permanent:32 |
| (b) Milk:32 | Permanent:20 |
| (c) Milk:16 | Permanent:10 |
| (d) Milk:15 | Permanent:25 |
14. Out of these two, one is replaced by the other. Choose the correct option.
- Milk teeth falls and are replaced by permanent teeth
 - It depends on person to person
 - Permanent teeth falls and are replaced by milk teeth
 - Both falls and are replaced by deciduous teeth
15. Solve the following crossword using hints given below:



ACROSS

- Appearance of water droplets outside a glass of cold water is an example of
 - evaporation
 - condensation
 - contractions
 - presentation
- It is the process in which a solid turns into a liquid on heating.
 - Lenient
 - Thawing
 - Melting
 - Climent
-is when a cup of water when placed in a colder region, turns into hard ice.
 - Freezing
 - Soliding
 - Cemented
 - Moulding

DOWN

- Process of change of liquid into gas on heating.
 - Evaporation
 - Contraction
 - Indigestion
 - Shrinkation

